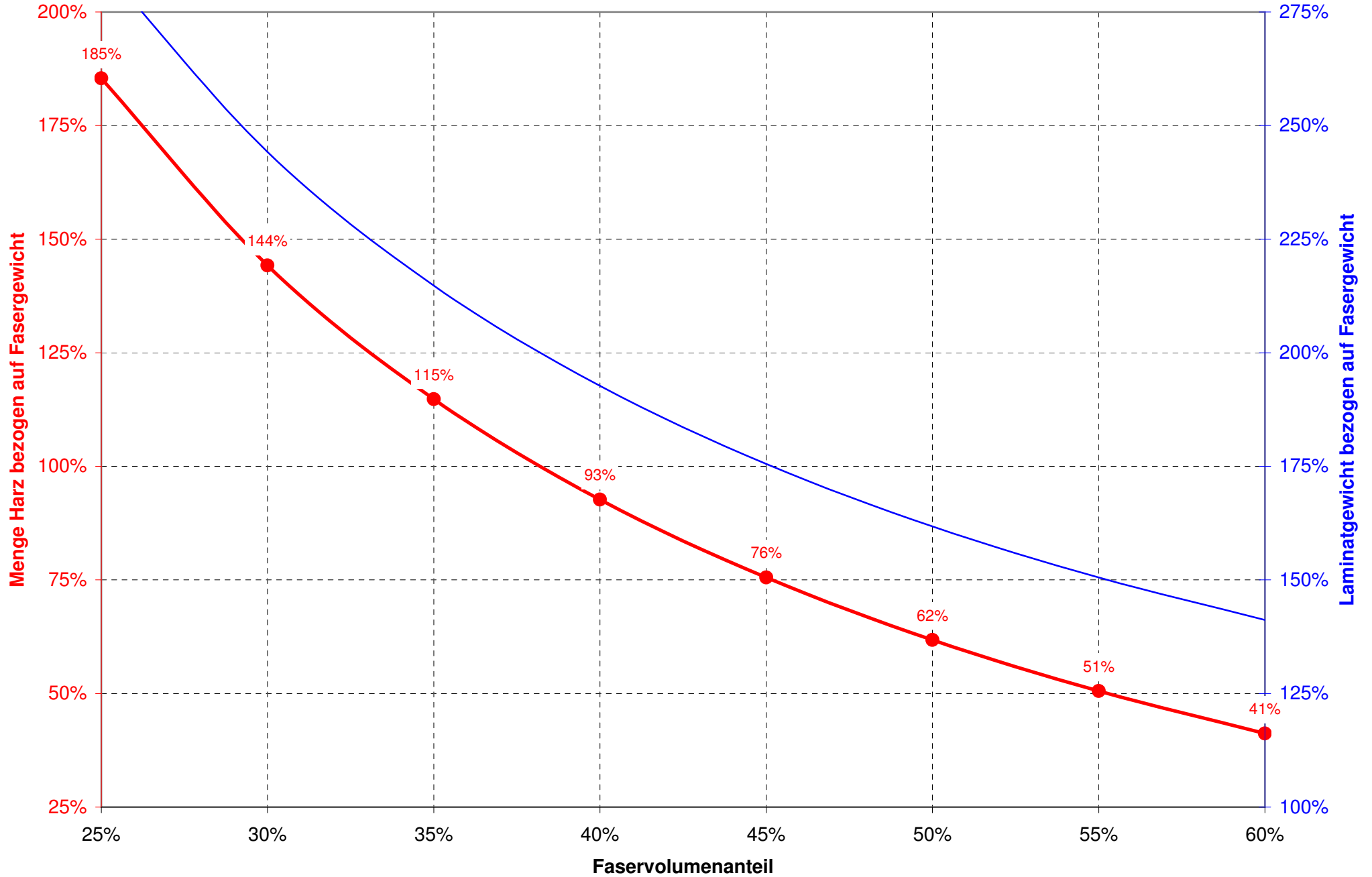


Faser: Kohle

relative Harzmasse Laminatgewicht

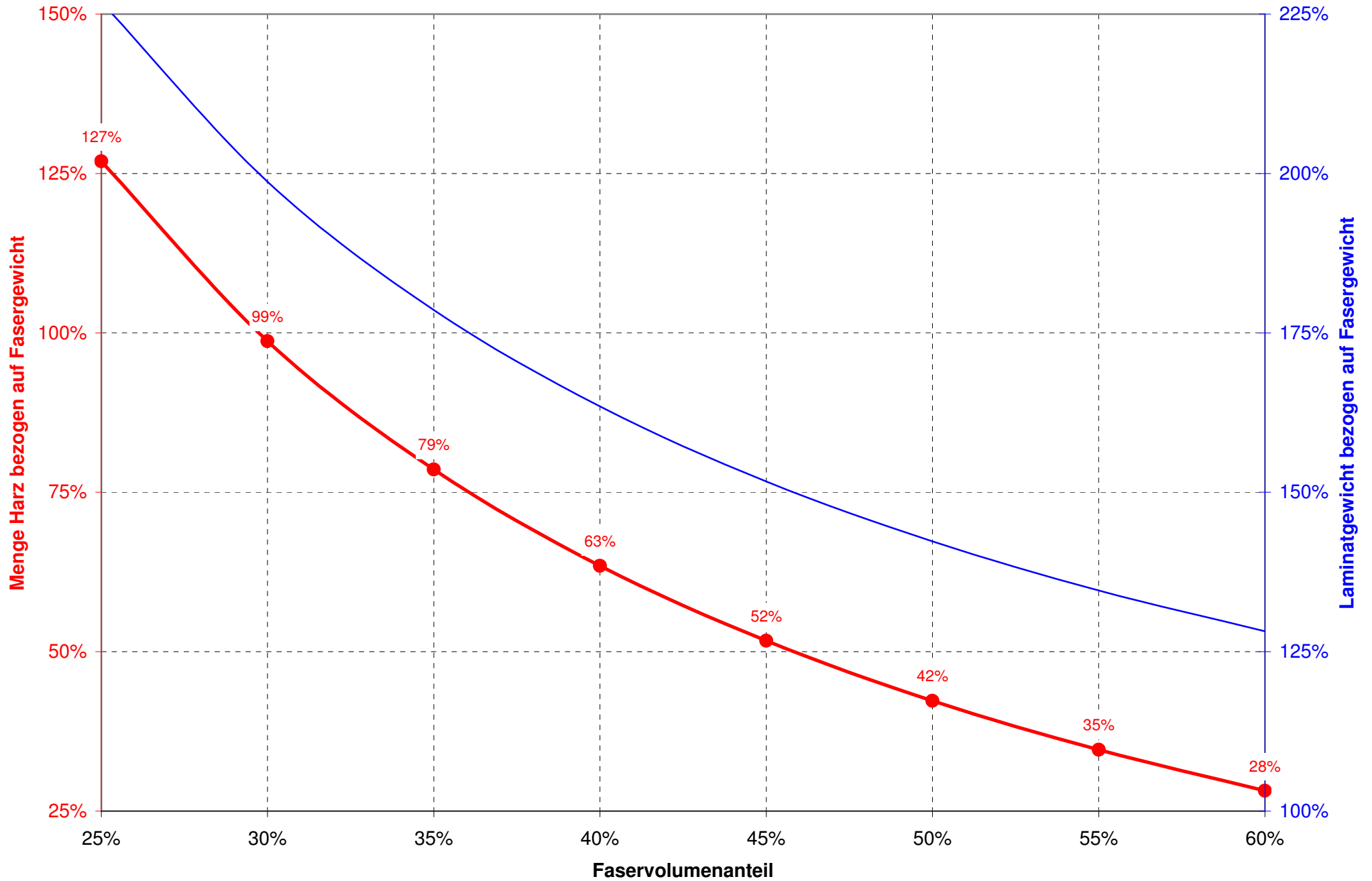
17.8.2014 / Ov



Faser: Glas

● relative Harzmasse — Laminatgewicht

17.8.2014 / Ov



Dichte Harz	1,10 g/cm³
Dichte Glasfaser	2,60 g/cm³
Dichte Kohlefaser	1,78 g/cm³

Faservolumenanteil	relative Harzmasse	Laminatgewicht
25%	127%	227%
30%	99%	199%
35%	79%	179%
40%	63%	163%
45%	52%	152%
50%	42%	142%
55%	35%	135%
60%	28%	128%

Faservolumenanteil	relative Harzmasse	Laminatgewicht
25%	185%	285%
30%	144%	244%
35%	115%	215%
40%	93%	193%
45%	76%	176%
50%	62%	162%
55%	51%	151%
60%	41%	141%